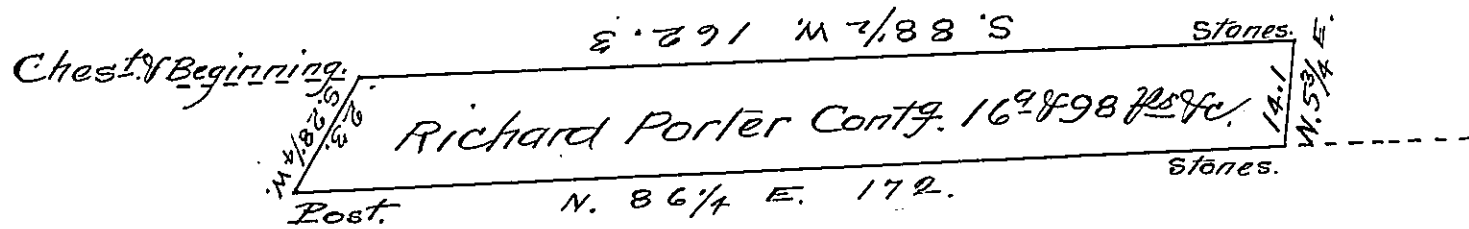


Churchman & Lynch



Lands of John Huss.

Situate in Chanceford Township in the County of York Containing as above set forth 1698-98 Perches and the usual allowance of 6 Per Cent^{ys}. Surveyed on the 1st day of May Anno Domini 1815. In Pursuance of a warrant for 15⁹. Granted to Richard Porter bearing date the 12th day of August Anno Domini 1814

Per. Jacob Spangler D.S.

To Richard T. Leech Esq^t.
Surveyor General
Harrisburg Pa.

IN TESTIMONY that the above is a copy of the original remaining on file in the Department of Internal Affairs of Pennsylvania, made conformably to an Act of Assembly approved the 16th day of February 1833, I have hereunto set my hand and caused the Seal of said Department to be affixed at Harrisburg, this Seventeenth day of July 1907.

Henry Howell
Secretary of Internal Affairs.